

NRX EVO



NRX EVO 500EH

CONNECTION GUIDE

NRX EVO 500EH - Connection Instructions

1. INSTALLATION

1.1 Telephone Connection

Connect one end of the coil cord to the handset and the other end to the socket located in the bottom of the phone. Replace the handset to the cradle.

NOTE: You will need to remove the wall mount bracket to access this socket.

Connect the small plug (RJ-11) of the telephone line cord to the socket at the back of the unit and the other plug to the telephone socket at the wall.

NOTE: If the RJ-11 to RJ-11 line cord is used, please ensure that the Blue plug is connected to the wall socket.

Connect the AC adaptor into a standard 220-240VAC mains socket and the power socket at the back of the NRX EVO 500EH.

The display will show **00-00-00**. After about 4 seconds the display will show **TOTAL:00 NEW:00**

If you have subscribed to a Caller ID Service, the time and date will be automatically updated when the first call is received. Otherwise, it is necessary to set the time and date manually, please refer to the Telephone Setup Menu.

In case of power failure or accidental unplugging of the AC adaptor, the built-in EEPROM will retain all the telephone's memory including phone book and CID records.

1.2 Connecting A Wireless Headset

The NRX EVO 500EH has an electronic hookswitch interface, located at the rear of the telephone. This allows wireless headset products from Plantronics, GN Netcom (Jabra) and Sennheiser to be connected to the telephone and control the line without the need for a handset lifter product.

Plantronics

Using the Plantronic cable supplied with the NRX EVO 500EH, plug the round plug into the 'Handset Lifter' port located at the bottom of your Plantronics headset base and the RJ45 plug into the 'E.H.S' port on the back of the telephone.

Connect the 'Telephone Cable Port' on the headset base to one of the headset ports located on the left side of the telephone using the cable provided with your headset product.

For operation of your Plantronics headset, please refer to the user guide that was supplied with the product.

The NRX EVO 500EH replicates the operation of the handset lifter allowing control of a phone call by the 'Call Control Button' located on the headset. You can also control the headset with the 'Speaker/Headset' button on the telephone. i.e If you have answered an incoming call using the 'Call Control Button' on the headset, you can press the 'Speaker/Headset' button on the telephone to end the call and turn off the headset.

GN Netcom (Jabra)

Using the GN cable supplied with the NRX EVO 500EH, plug the end with a white band close to the plastic plug into the 'RHL/AUX' port located at the bottom of your GN headset base and other end plugs into the 'E.H.S' port on the back of the telephone.

Connect the 'Telephone Port' on the headset base to one of the headset ports located on the left side of the telephone using the cable provided with your headset product.

NOTE: If your GN headset model has multiple hookswitch modes, please ensure the base is set to 'GN RHL' - Refer to the user guide supplied with your headset.

The NRX EVO 500EH replicates the operation of the handset lifter allowing control of a phone call by the 'Talk Button' located on the headset. Once the line has been seized by the headset, the 'Speaker/Headset' button on the telephone is disabled until the call is completed by pressing the 'Talk Button' on the headset again.

Sennheiser

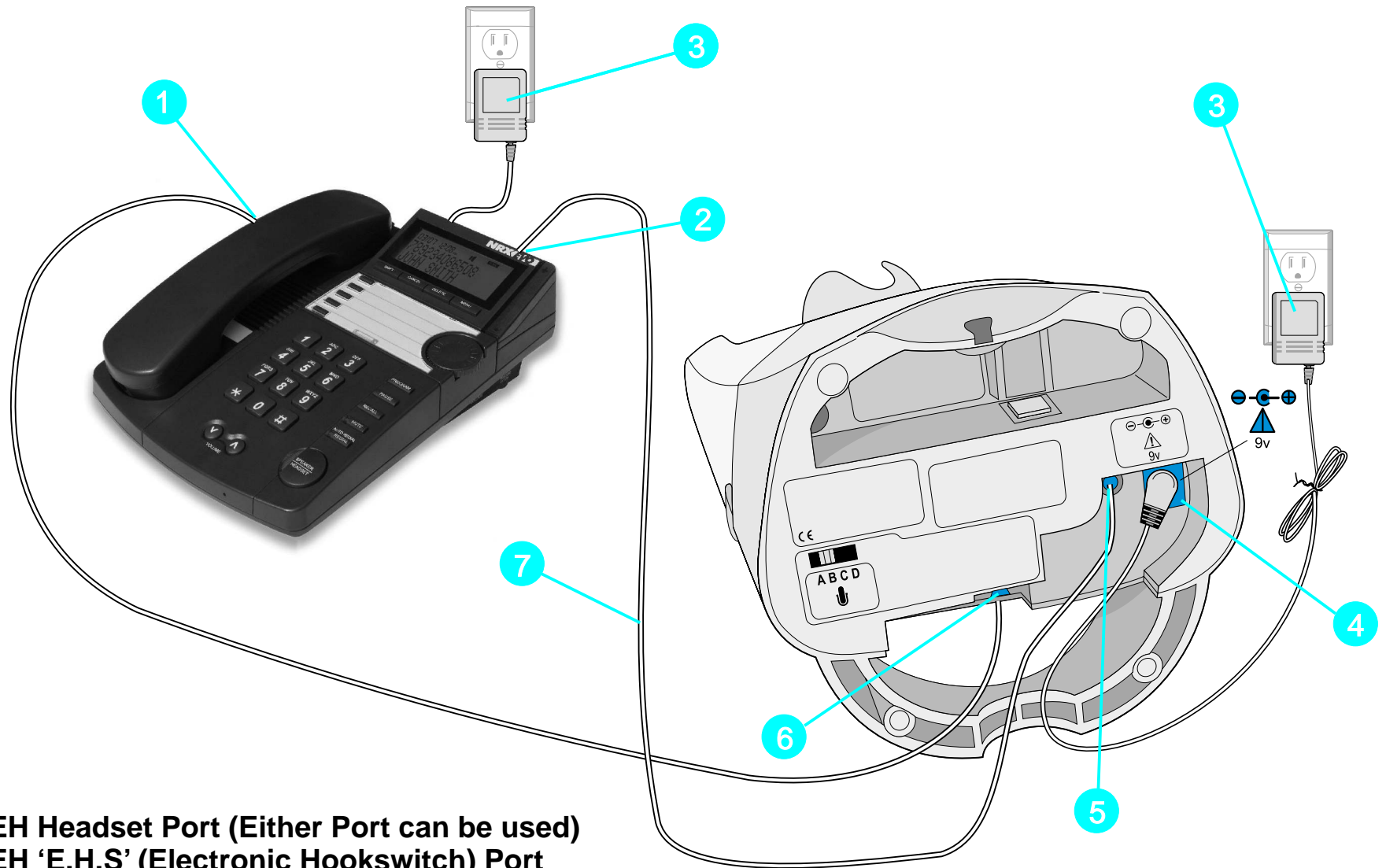
To connect a Sennheiser wireless headset to the NRX EVO 500EH, the Sennheiser TCI-01 connection box is required.

Connect the TCI-01 to the Sennheiser headset base with the cable supplied using the DW Com port, then connect to the telephone using the GN cable supplied with the phone. The end with a white band close to the plastic plug connects to the 'HL1 port' on the TCI-01 and other end plugs into the 'E.H.S' port on the back of the telephone.

The NRX EVO 500EH replicates the operation of the handset lifter allowing control of a phone call by the 'Talk Button' located on the headset. Once the line has been seized by the headset, the 'Speaker/Headset' button on the telephone is disabled until the call is completed by pressing the 'Talk Button' on the headset again.

Plantronics - Connection Diagram

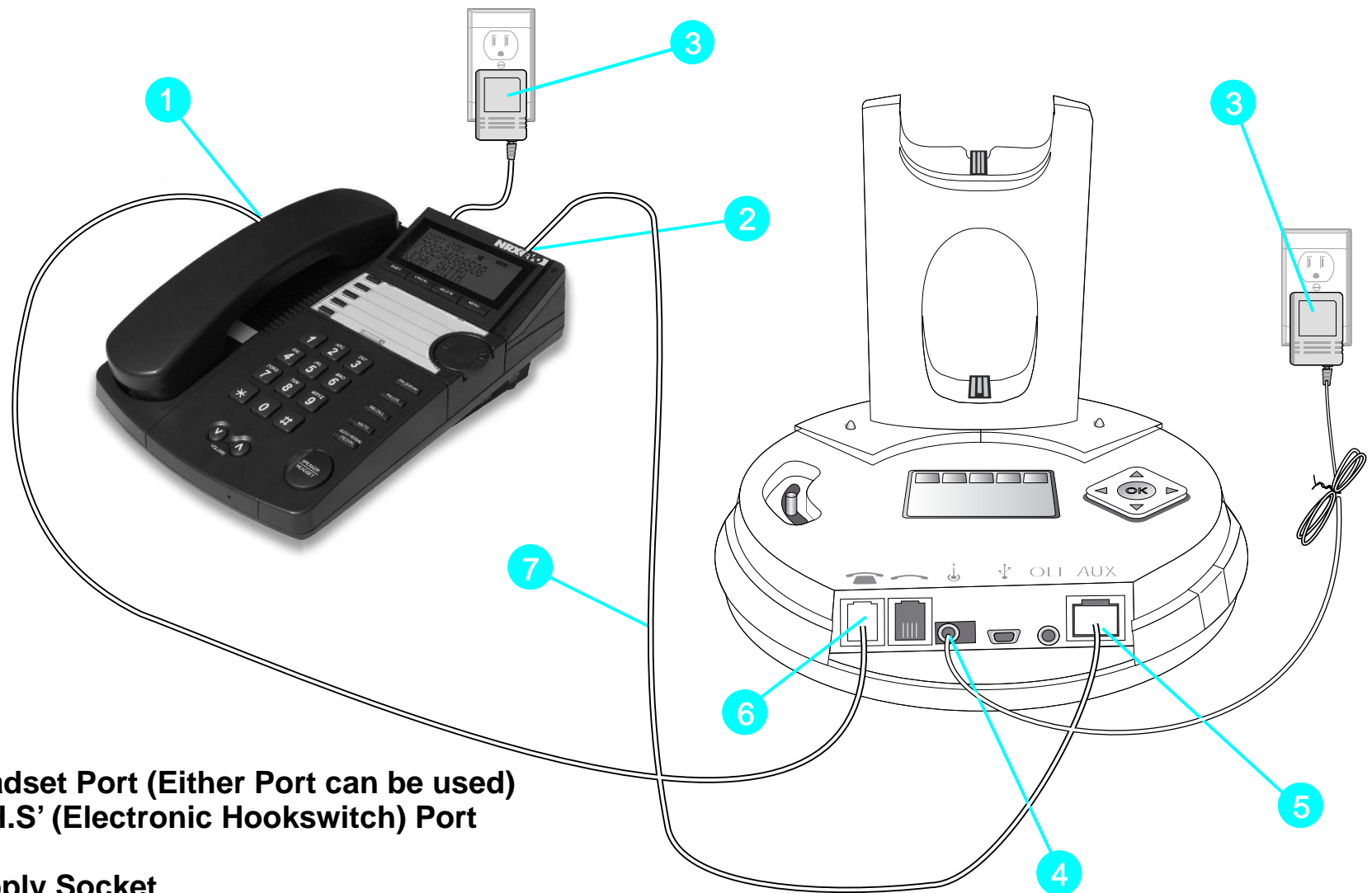
CS60/CS70N/Supraplus Wireless/Voyager 510



- 1. NRX EVO 500EH Headset Port (Either Port can be used)
- 2. NRX EVO 500EH 'E.H.S' (Electronic Hookswitch) Port
- 3. Power Supply
- 4. Plantronics Power Supply Socket
- 5. Plantronics Handset Lifter Port
- 6. Plantronics Telephone Port
- 7. Plantronics Connection Cable (Supplied With NRX EVO 500EH)

GN JABRA - Connection Diagram

GN 9120/GN 9330/GN 9350

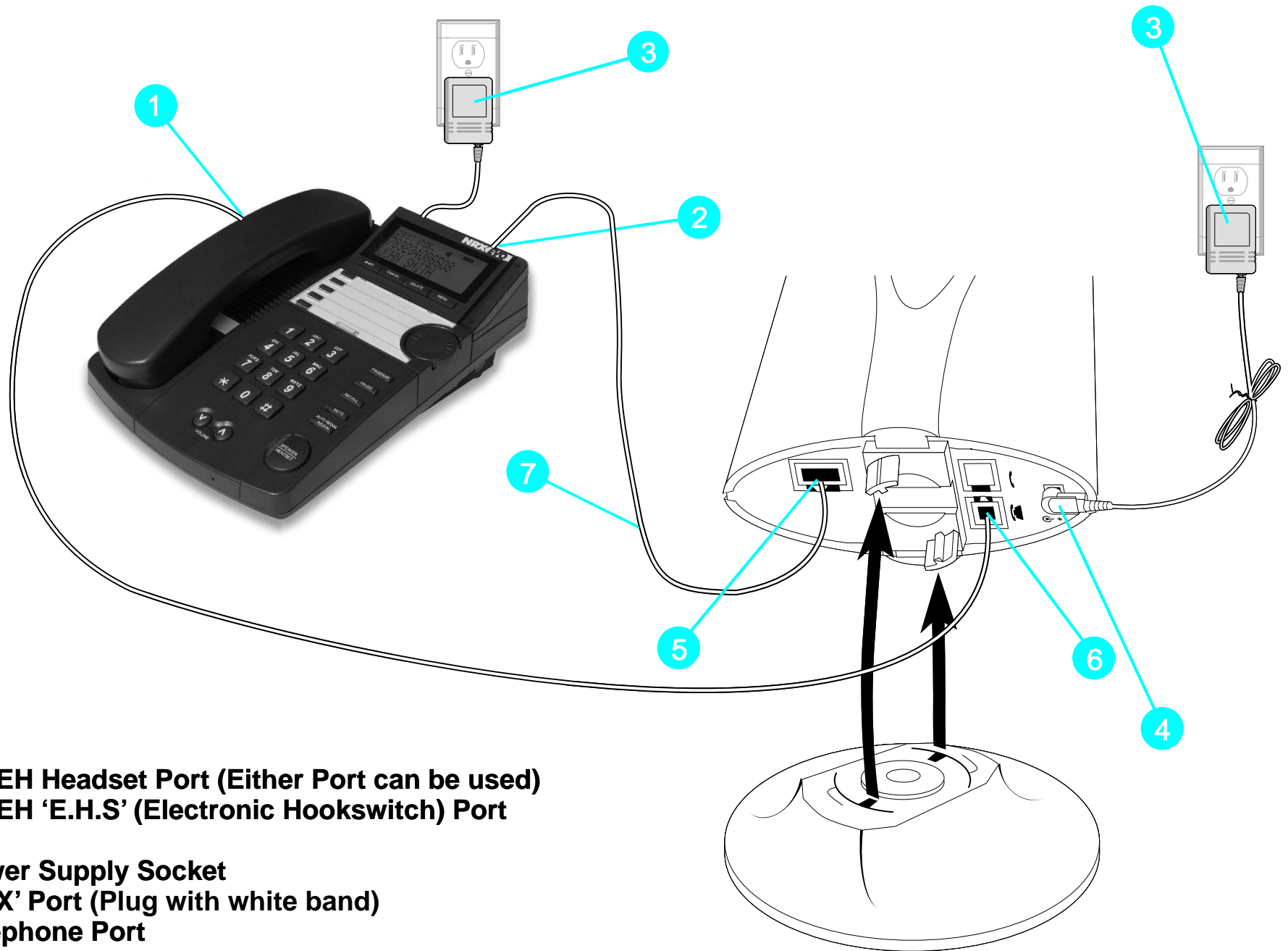


1. NRX EVO 500EH Headset Port (Either Port can be used)
2. NRX EVO 500EH 'E.H.S' (Electronic Hookswitch) Port
3. Power Supply
4. GN Jabra Power Supply Socket
5. GN Jabra 'AUX' Port (Plug with white band)
6. GN Jabra Telephone Port
7. GN Jabra Connection Cable (Supplied With NRX EVO 500EH)

NOTE: The NRX EVO 500EH replicates the functionality of the GN1000 RHL Handset lifter so the Headset base needs to be set to the 'GN RHL' setting. Please refer to your headset manual for information on how to do this.

GN JABRA - Connection Diagram

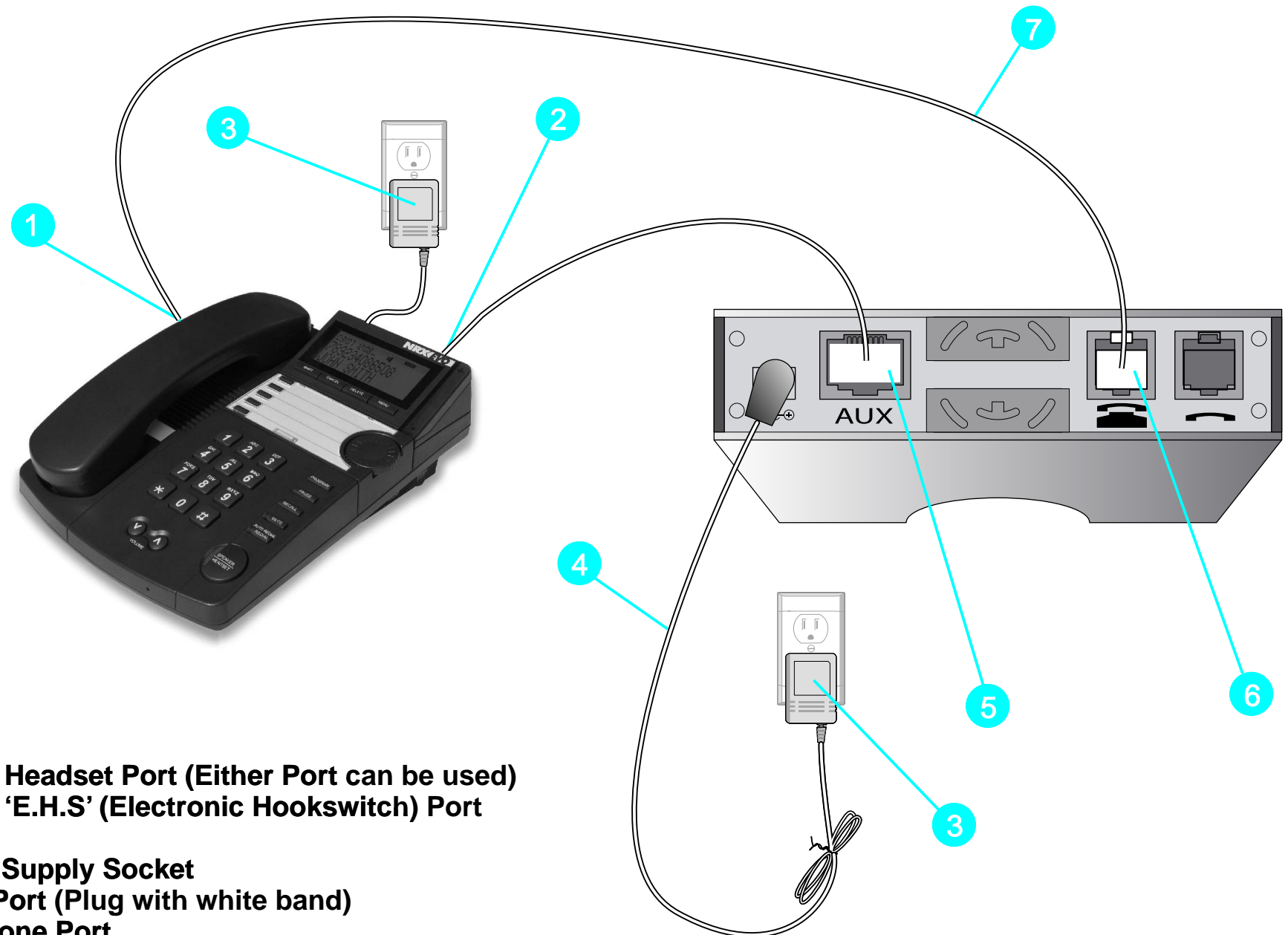
GN Ellipse Premium



1. NRX EVO 500EH Headset Port (Either Port can be used)
2. NRX EVO 500EH 'E.H.S' (Electronic Hookswitch) Port
3. Power Supply
4. GN Jabra Power Supply Socket
5. GN Jabra 'AUX' Port (Plug with white band)
6. GN Jabra Telephone Port
7. GN Jabra Connection Cable (Supplied With NRX EVO 500EH)

GN JABRA - Connection Diagram

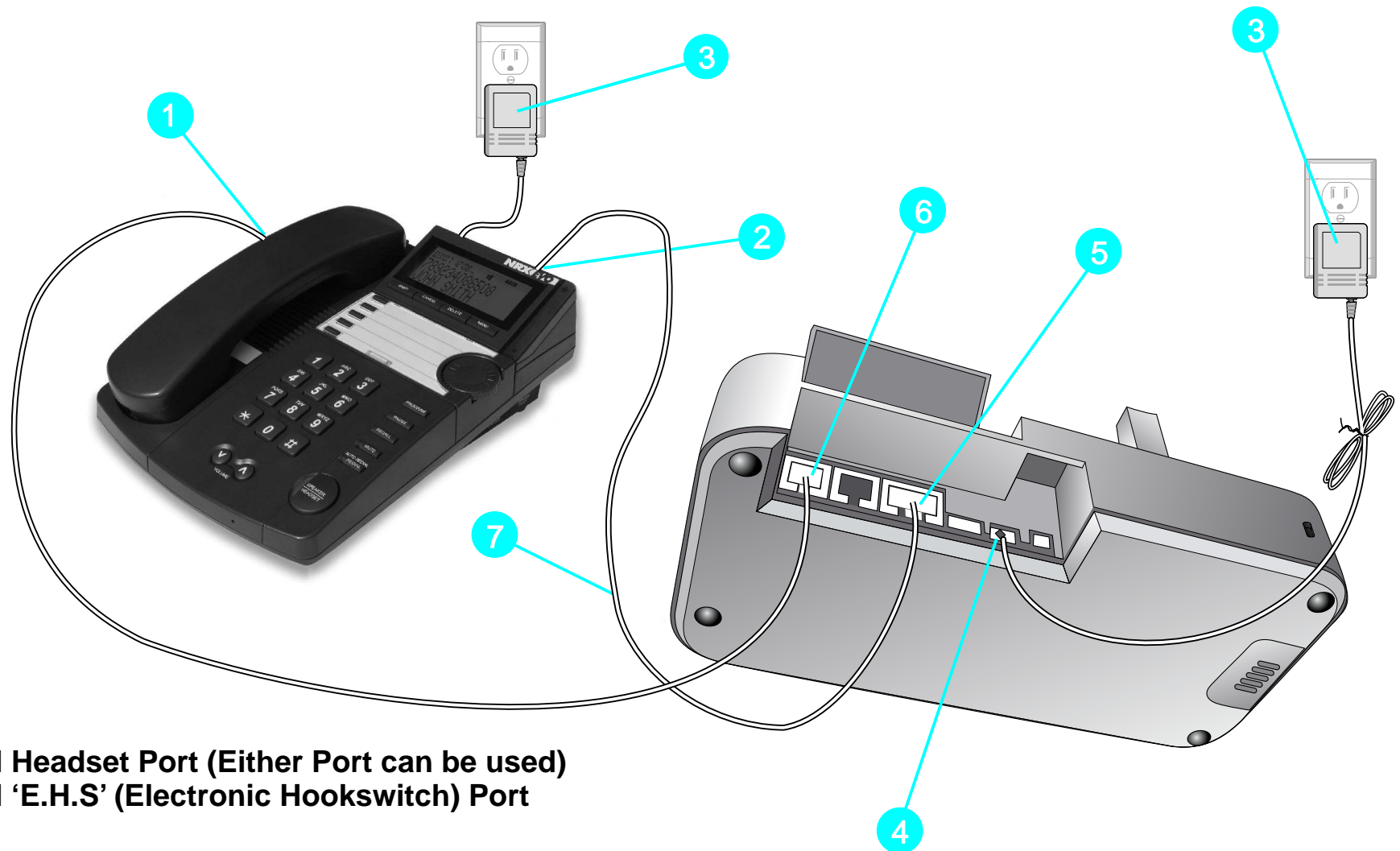
GN 9120



1. NRX EVO 500EH Headset Port (Either Port can be used)
2. NRX EVO 500EH 'E.H.S' (Electronic Hookswitch) Port
3. Power Supply
4. GN Jabra Power Supply Socket
5. GN Jabra 'AUX' Port (Plug with white band)
6. GN Jabra Telephone Port
7. GN Jabra Connection Cable (Supplied With NRX EVO 500EH)

GN JABRA - Connection Diagram

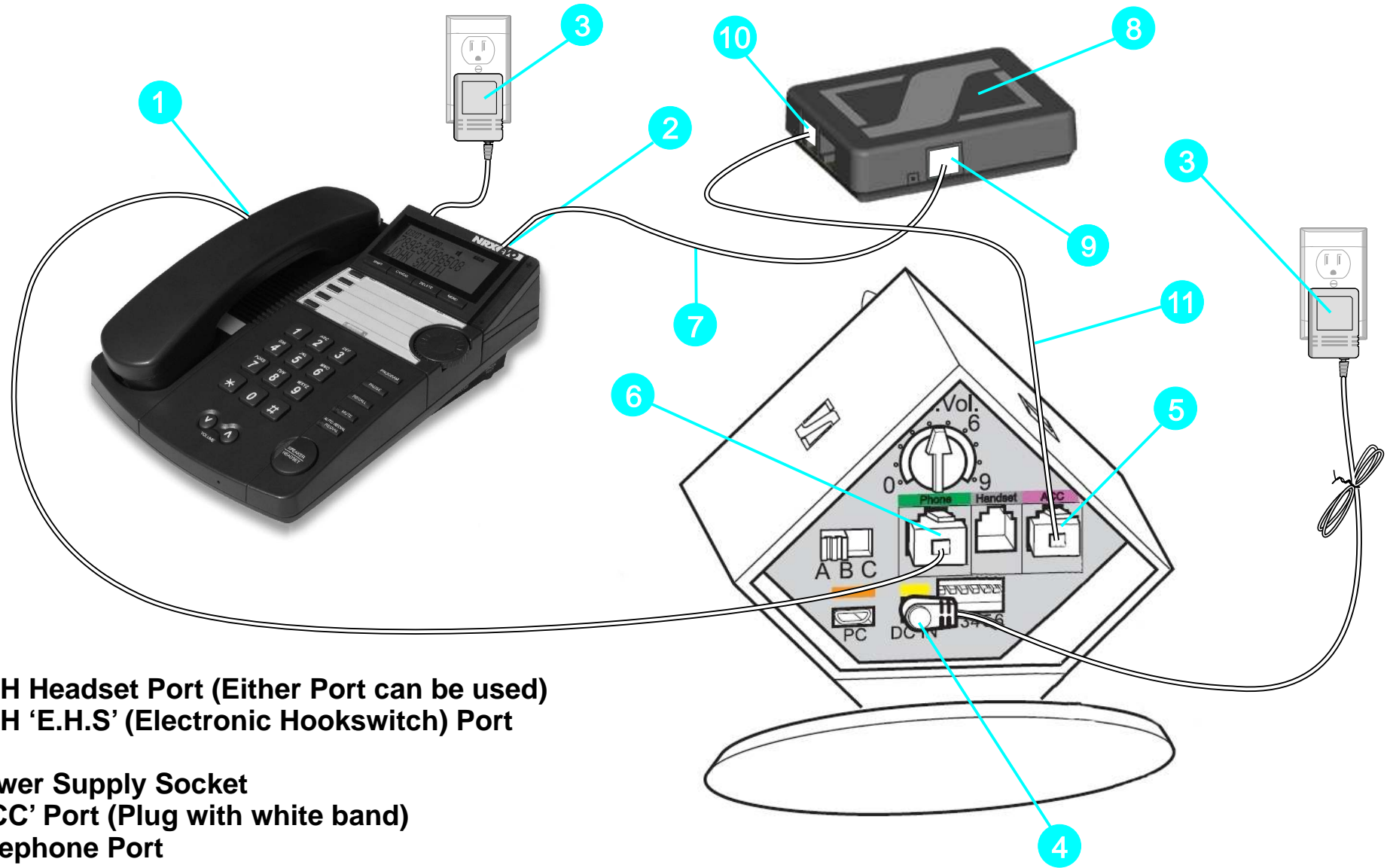
GN 9460/GN 9560-DUO/GN 9470



1. NRX EVO 500EH Headset Port (Either Port can be used)
2. NRX EVO 500EH 'E.H.S' (Electronic Hookswitch) Port
3. Power Supply
4. GN Jabra Power Supply Socket
5. GN Jabra 'AUX' Port (Plug with white band)
6. GN Jabra Telephone Port
7. GN Jabra Connection Cable (Supplied With NRX EVO 500EH)

NOTE: The NRX EVO 500EH replicates the functionality of the GN1000 RHL Handset lifter so during the initial Headset base setup, select the 'GN1000' option not the 'Electronic Hookswitch' setting.

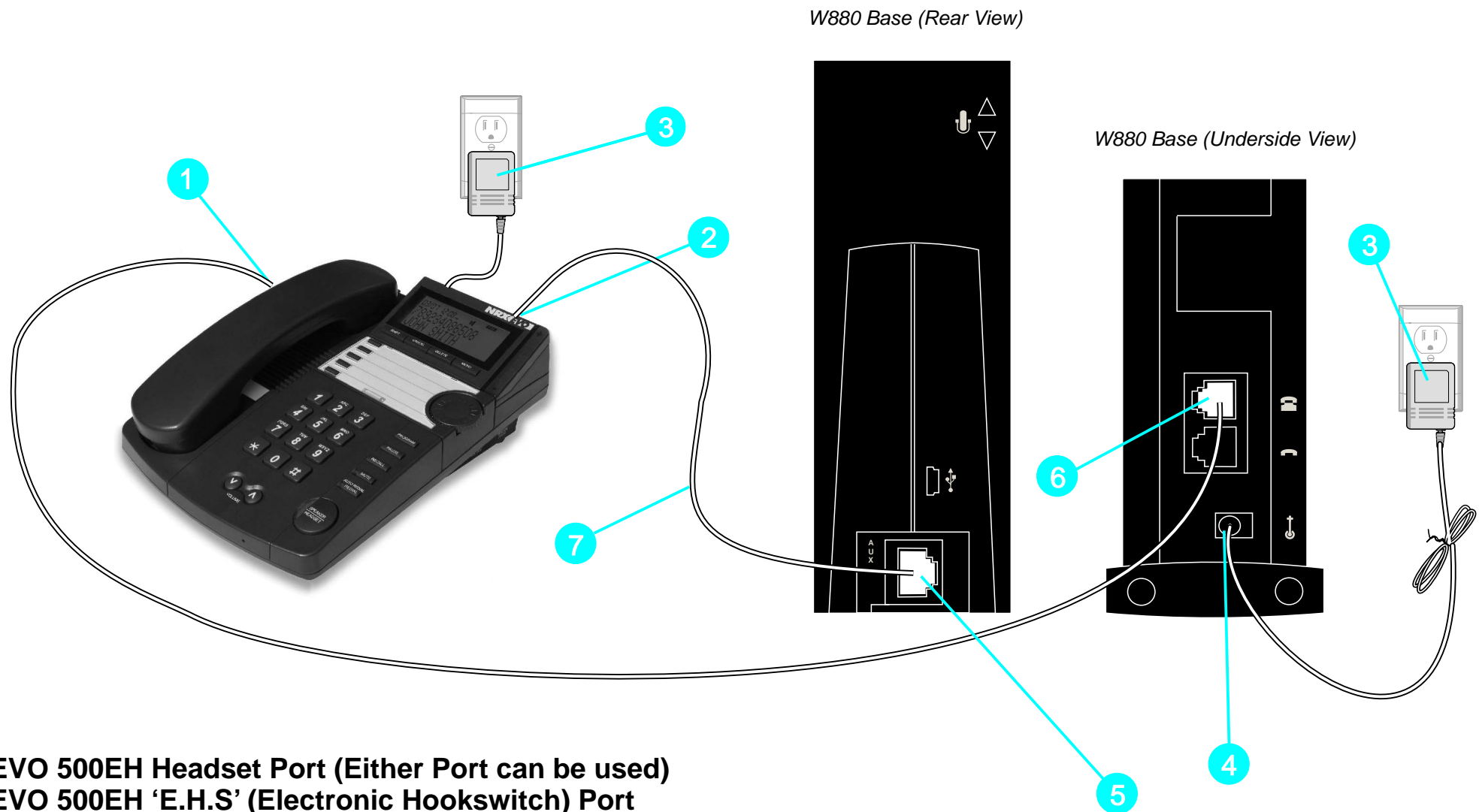
SENNHEISER DW OFFICE - Connection Diagram



1. NRX EVO 500EH Headset Port (Either Port can be used)
2. NRX EVO 500EH 'E.H.S' (Electronic Hookswitch) Port
3. Power Supply
4. Sennheiser Power Supply Socket
5. Sennheiser 'ACC' Port (Plug with white band)
6. Sennheiser Telephone Port
7. GN Jabra Connection Cable (Supplied With NRX EVO 500EH)
8. TCI 01 Connection Box
9. HL1 Socket (Plug with white band)
10. DW Com Socket
11. TCI 01 Connection Cable (Supplied with TCI 01 box)

EMOTION & AGENT - Connection Diagram

W880 DECT HEADSET



1. NRX EVO 500EH Headset Port (Either Port can be used)
2. NRX EVO 500EH 'E.H.S' (Electronic Hookswitch) Port
3. Power Supply
4. W880 Power Supply Socket
5. W880 'AUX' Port (Plug with white band)
6. W880 Telephone Port
7. Connection Cable (Supplied With NRX EVO 500EH)