

Notice 1
You are cautioned that changes or modifications not expressly approved by the party responsible for compliance could void the user authority to operate the equipment.

Notice 2
This equipment has been tested and found to comply with the limits for a Class B digital device, pursuant to part 15 of the FCC rules. These limits are designed to provide reasonable protection against harmful interference in a residential installation. This equipment generates, uses and can radiate radio frequency energy and, if not installed and used in accordance with the instructions, may cause harmful interference to radio communications.

This equipment complies with FCC radiation exposure limits set forth for an uncontrolled environment. End users must follow the specific operating instructions for satisfying RF exposure compliance. This transmitter must not be co-located or operating in conjunction with any other antenna or transmitter.

User Manual

For Model BTHF009D Plus Bluetooth Portable Handsfree Car Kit With Caller ID Display

Contents

Overview.....	3
Quick User Guide.....	4-5
Getting Started.....	6
Charging.....	6
Switching On / Off.....	6
Pairing with a phone.....	7
Connect / Reconnect to phone.....	8
Handsfree functions.....	8-9
Use in car.....	10
Use at office / home.....	10
Care and maintenance.....	11
Specification.....	11
FCC Notice.....	12

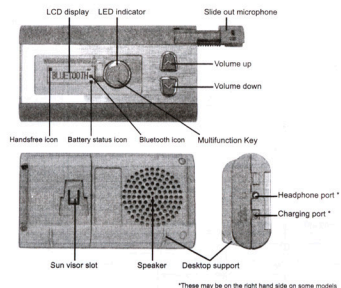
Overview

Model BTHF009D Plus Bluetooth Portable Handsfree Car Kit with Caller ID Display

Thank you for selecting BTHF009D Plus Bluetooth portable handsfree car kit. It is a rechargeable speakerphone which is easy to operate in car and portable to use anywhere. It is specially designed for connecting Bluetooth compatible mobile phones without wires in car. No matter the car is ignited or not, you can enjoy the freedom of wireless communication. No power wire is required. Using the single-button control of the handsfree, you can make and answer calls without touching the phone. You can even leave the phone in pocket or anywhere inside the car. With built-in DSP circuit, echo and background noise are cancelled and suppressed effectively. Thus providing clear sound and high quality conversation even in noisy environment.

This handsfree car kit is specially designed for Bluetooth mobile phones or other Bluetooth compatible devices that support the Handsfree or Headset profiles.

The Bluetooth wireless technology is a worldwide specification for a small form-factor, low-cost and short-range (about 10 meters) radio solution providing links between mobile computers, mobile phones, other portable and handheld devices and connectivity to the internet.



Quick User Guide

Status	Operation	LED Indicator & Sound	LCD Display
Switch On	Simply slide the microphone across to the right from off mode.	A low to high 'do-do' sound. Flashes blue every 5 seconds, indicates in idle mode.	HF009 > BLUETOOTH
Connect / Reconnect (with paired phone)	In idle mode, press Multifunction Key once OR Select paired device 'HF009' on mobile phone, and then select 'Connect'.	Flashes blue every second indicates searching for paired devices. If connected to mobile with Handsfree Profile, blue always on indicates in standby mode.	Connecting > BLUETOOTH > [Phone Icon]
Switch Off	Simply push the microphone back.	LED indicator goes off.	-
Pairing (for the first time using the handsfree)	1. Switch on the handsfree. 2. Enable Bluetooth feature of the mobile phone. 3. In the Bluetooth menu, select 'add device' or 'search device'. 4. 'HF009' appears in the device list, press 'yes'. 5. Enter fixed pass key '8888'. Pairing completed. 6. Edit the device name if you would like to personalize it.	Flashes blue every 5 seconds, indicates in idle mode. If connected with Handsfree Profile, blue always on indicates in standby mode.	Mobile phone model name Connecting BLUETOOTH
Receive Call	When handsfree is ringing, press Multifunction Key once.	-	Call number Active Call
Reject Call	When handsfree is ringing, press Multifunction Key twice.	-	BLUETOOTH
End Call	During a call, press Multifunction Key once.	-	BLUETOOTH
Transfer to phone	During a call, press & hold Multifunction Key for 3 seconds. To transfer back, press once again.	-	BLUETOOTH

Status	Operation	LED Indicator & Sound	LCD Display
Switch to/from waiting call	During a call, when another call dials in: 1. Reject the incoming call if no any operation in 8 seconds. 2. Reject the incoming call if double click Multifunction Key. 3. To receive the incoming call and end the active call, click Multifunction Key once. 4. To switch to the incoming call, press & hold Multifunction Key for 2 seconds. To switch back, press & hold for 2 seconds again.	'do' sound	Caller number > Call Hold
Redial last number	In standby mode, press Multifunction Key twice.	-	Redial
Voice dial	In standby mode, press Multifunction Key once.	A tone from the handsfree indicates the phone is ready to receive voice tag.	Voice Call > Dialing
Mute microphone	During a call, click together '+' and '-' buttons once. Click again to hear the other side.	'do' sound (You can still hear the other side.)	MUTE MIC / UNMUTE MIC
Adjust Volume	Click '+' or '-' button to control the volume up or down.	-	VOL
Privacy call	Connect external headphone to headphone port.	-	-
Disconnect with mobile	Press & hold '+' for 2 seconds. To reconnect to phone, click Multifunction Key once.	-	BLUETOOTH
Low battery	-	Red & Blue flashes and 'do' sound	Low Battery
Charging	Connect to charger	Constantly red on	Charging
Charging completed	Within 3 hours	Stops red	BLUETOOTH

Connect / Reconnect to phone

After the handsfree is switched on, it is in idle mode. It is waiting to be paired or connected by mobile phone. The LED indicator flashes blue every 5 seconds indicates this mode. When the handsfree and the device are disconnected, the handsfree will return back to idle mode.

To connect with phone

EITHER

To connect with paired phone or reconnect with previously connected phone, click multifunction key once. The handsfree will search and connect to the phone nearby automatically. (The LED indicator flashes blue every second indicates the searching mode. The searching may last for 1/2 minute. If no phone can be found, the handsfree will return to idle mode.)

OR

To connect with the handsfree through the phone, in the setting menu of the phone, select 'HF009' from 'Paired Device'. Select 'connect' and the phone will connect to the handsfree.

Handsfree Functions

Receive call When handsfree is ringing, press Multifunction Key once to receive the call.

Reject call When handsfree is ringing, press Multifunction Key twice to reject the call.

End call During a call, press Multifunction Key once.

Switch to/from waiting call (call waiting) When a second call dials in during the call:
1. Reject the incoming call if no any operation in 8 seconds.
2. Reject the incoming call if double click Multifunction Key.
3. To receive the incoming call and end the active call, click Multifunction Key once.
4. To switch to the incoming call, press and hold Multifunction Key for 2 seconds. To switch back, press and hold for 2 seconds again.

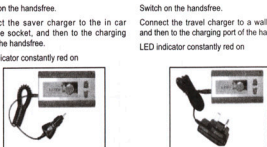
Getting Started

For the first time using the handsfree, please:

- Charge handsfree with the provided charger for 3 hours.
- Ensure a Bluetooth function supporting mobile phone is ready for pairing.

Charging

Charge with saver charger (cigarette light adaptor) Switch on the handsfree. Connect the travel charger to a wall outlet, and then to the charging port of the handsfree. LED indicator constantly red on



- Notes:
- Maximum charging time: 3 hours
 - LED indicator stops red when fully charged.
 - Talking time: up to 13 hours
Standby time: up to 220 hours
 - Low battery signal: LED indicator flashes blue & red, 'do' sound until handsfree is recharged.
 - Do not charge up to 24 hours.

Switch On / Off

Switch on handsfree Simply slide out microphone across to the right from off mode, you will hear a low to high 'do-do' sound and LED indicator flashes blue.



Switch off handsfree Simply push microphone back, LED indicator then goes off.



Pairing with a phone

Before using the handsfree, you must pair it with the mobile phone first. Once the handsfree and the phone has paired, they store the ID of each other. Thus they can connect each other automatically. You can check, delete or rename the paired device in the devices list of the mobile phone.

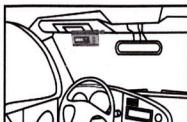
1. Place the Bluetooth handsfree and the Bluetooth mobile phone within a distance of 1 meter.
2. Switch on the Bluetooth mobile phone and enable Bluetooth feature. If the phone has 'Profile' options, you are recommended to select 'Handsfree Profile' rather than 'Headset Profile'.
3. Turn on the handsfree. The LED indicator flashes blue every 5 seconds indicates it is in idle mode.
4. On the Bluetooth mobile, searching for device, 'HF009' will appear in the device list.
5. Select device 'HF009' and enter fixed pass key '8888'. Pairing completed. The LED indicator turns blue steadily indicates the handsfree is connected to the phone with Handsfree Profile.
6. Make sure the paired mobile has returned to main menu.
7. The volume is automatically set to middle level. For best performance, press '+' or '-' to adjust a suitable volume level.

Check if the mobile displays any message or icon which indicates the connecting status. After pairing completed, some phones automatically connect to handsfree immediately. Some phones keep waiting for building up the connection manually. In this case, press Multifunction Key once, BTHF009D Plus will connect to the phone. Or you can select 'HF009' from the 'Paired Device' of the phone. the phone will connect to the handsfree. Please refer to your phone's user manual.

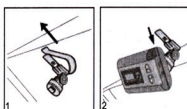
You should now be able to make wireless communication with the handsfree. Keep the distance between the handsfree and the mobile within 10 meters and free from obstacles. You can dial and receive calls by the phone, or activate the voice dialing, redial the last number and receive calls through the handsfree.

* 'Handsfree Profile' supports 'Caller ID display', 'Voice dial', 'Redial the last number', 'Call waiting' and 'Call transfer' functions. If the mobile phone only supports 'Headset Profile', those functions are not available.

Use in car



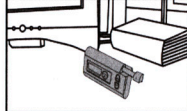
1. Inside the car, clip the provided bracket to the sun visor as shown.
2. Fit the handsfree on the bracket.
3. To flip the handsfree up or down, slack the screw of the bracket gently.
4. After the handsfree has adjusted to a comfortable view angle facing you, lock the screw.



5. Slide out microphone to switch on. For the best performance, extend the microphone fully.

Use at office / home

1. Put the handsfree on the desktop.
2. Put it on a flat surface.
3. Slide out microphone to switch on. For the best performance, extend the microphone fully.



Care and Maintenance

- Check the laws and regulations on the use of mobile phones and handsfree equipment in the area where you drive.
- Always give full attention to driving. In some areas, you are required to pull off the road and park before making or answering a call.
- Do not expose the handsfree to extreme temperature or direct sunlight.
- Do not expose it to moisture or humidity. Keep it away from any liquid or chemicals.
- Do not keep the device in dusty or dry area. Only use a soft damp cloth to clean it.
- Do not attempt to disassemble the handsfree and the chargers.
- Do not try to replace this rechargeable battery inside the handsfree.
- Charge the handsfree only with the supplied charger.
- Travel charger can only be used indoor under normal temperature and humidity.

Specification

Bluetooth Specification	: Version 1.2 compliant
Bluetooth Profile Supported	: Headset and Handsfree Profiles
Frequency Range	: 2.4 GHz spectrum
Working Distance Range	: 10 Meters (class 2)
Dimensions (main unit)	: 110 (L) x 61 (W) x 32 (T) mm
Weight (main unit)	: 133 g
LCD Display	: 12 digits caller number display, battery status icon, blue backlight.
DSP	: Full duplex transmission, noise suppression and echo cancellation.
Pairing	: Memorize up to 4 mobile phones simultaneously.
Charging Time	: Within 3 hours
Talking Time	: Up to 13 hours
Standby Time	: Up to 220 hours
Rechargeable Battery	: Lithium-ion, 3.6V, 1000 mAh installed
Battery Protection	: Over charge and over discharge protection
Input Voltage	: 350 mA (internal controlled)
Input Voltage	: DC 5V
Speaker Power	: 2W (max)
Speaker Impedance	: 8 ohm
Sensitivity of Microphone	: -47dB